

Absolute Automate

Gain Insights And Save Time With Endpoint Automation



Your team faces many challenges in cybersecurity and asset management. **Let Absolute Automate help you get the maximum benefits from Absolute.**

UNITE INSIGHT, WORKFLOW, AND ACTION

Speed and accuracy are critical to making business decisions. With Absolute Automate, our Professional Services team will automate your asset management workflows, putting the right data and insights into the hands of your security operations and IT team. With your systems primed for optimal agility, your team will be ready to respond to your toughest IT challenges.



IT Asset Management Challenges

- Manual actions in policy enforcement
- Coordinating data and actions from disparate systems
- Cumbersome workflows to action enforcement
- Remote management and messaging



Security Challenges

- Repair of compromised security controls
- Flexible incident response tools
- Enforcing security policies
- Responding to mass attacks
- Blind spots caused by disconnected systems

ABSOLUTE AUTOMATE

Absolute Automate turns the Absolute Platform into your ally, equipping you with the data and insights you need to manage security operations with speed and confidence. Automate tedious workflows, bridge the data divide between disparate systems, and gain unique insights to differentiate you for industry success.

Observe	Persist	Act	Integrate
<ul style="list-style-type: none"> • Unique insights through expanded reporting and data visualization options • Monitoring and alerting with dynamic, automated policies for industry-standard or business-specific compliance 	<ul style="list-style-type: none"> • Persist virtually any endpoint application via Absolute's patented resilience platform • Go beyond applications and ensure your business policies are always enforced 	<ul style="list-style-type: none"> • Automate actions that detect, prevent, and respond to security threats or incidents via Containment, Automated Reach, and Device Freeze • Repair or remediate devices automatically and at scale • Automate lifecycle workflows to save time and money 	<ul style="list-style-type: none"> • Share data or facilitate device actions with your SIEM, SOAR, and ITSM systems • Integrate Absolute data with virtually any 3rd party system/platform via CSV or API integration options

OBSERVE

Gain insights and uncover problems before they become critical, with customized reports provided with the detail and frequency you need.

- Automated grouping
- Specialized executive reports
- Policy, location, or usage alerting
- Specialized scanning, monitoring, and alerting
- Trends and suspicious activity
- Compliance monitoring
- Device location and anomaly alerts

PERSIST

With automated device resilience, you can have confidence that your defense strategies are intact.

- Install, update, or repair virtually any application
- Ensure endpoint policies such as encryption are always on
- Ensure business critical controls are in place on all endpoints
- Deploy or repair recovery tools

ACT

Absolute Automate helps automate and schedule actions based on configurable conditions, alerts, integrations, or other criteria, allowing you to remedy challenging incidents, know when devices are out of compliance, and manage lifecycle asset management with ease.

- Re-enable device encryption
- Automate device freeze
- Automate policy enforcement
- Quarantine or contain devices
- Device repair
- Account repair
- Automated unique actions and alerts
- Remove banned software
- Send notifications to end users
- Policy compliance actions
- Respond to data risk
- License compliance
- Respond to suspicious geolocation anomalies
- Group logic and heuristics
- OEM data exchange and integration
- Custom device command, response
- SIEM and ITSM data connectors
- Live-action device containment
- Automated agent removal

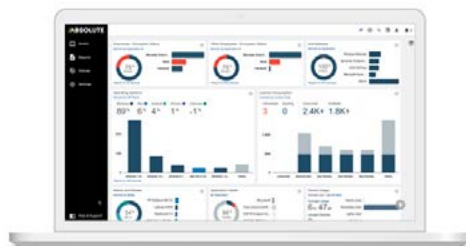
INTEGRATE

By leveraging automation and the Absolute Platform, you can optimize your team's agility and effectiveness, accelerate your asset management tasks, and reduce your incident response turnaround.

- Specialized API integration
- Integration with security orchestration and automation response systems
- Integration into any system via CSV or flat file integrations
- Integration with ITSM systems



See how Absolute can transform your organization's IT and Security



EMAIL:
sales@absolute.com



SALES:
absolute.com/request-a-demo



PHONE:
North America: 1-877-660-2289
EMEA: +44-118-902-2000



WEBSITE:
absolute.com